

KL 200

cold, compact and capable

The KL 200 is a versatile, compact and cost effective 20-watt halogen cold light source. Small space requirements combined with excellent light efficiency in an attractive modern design make this unit the right choice for a variety of general lighting applications in the fields of Stereo Microscopy, Macroscopy and Photography.

Simple light adjustment by means of a 3-step light intensity control, easy and safe lamp change, and quick exchange of light guides, allow extremely easy handling of this light source.

Special efforts are taken during the development of optimized convection cooling of the unit, which makes a fan redundant. Consequently, the light source in its injection molded housing is totally free of noise and vibration. This enables the unit to be utilized in varying environments from industry to biological labs, to photo studios or home-tech applications.

The light source is available in 120- and 230-volt versions. A broad range of light guides with active diameters of up to 7 mm (.28") as well as a selection of color filters, polarizers and focusing accessories completes the offering. Please refer to the system diagram on page 6/7 and the SCHOTT Standard Product Catalog for details.

The KL 200 has been approved and certified by CSA (C/US) (120-volt version). The 230-volt version carries the CE conformity label.



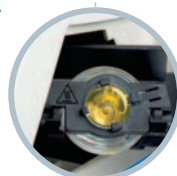
3-step intensity control button



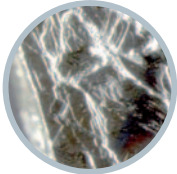
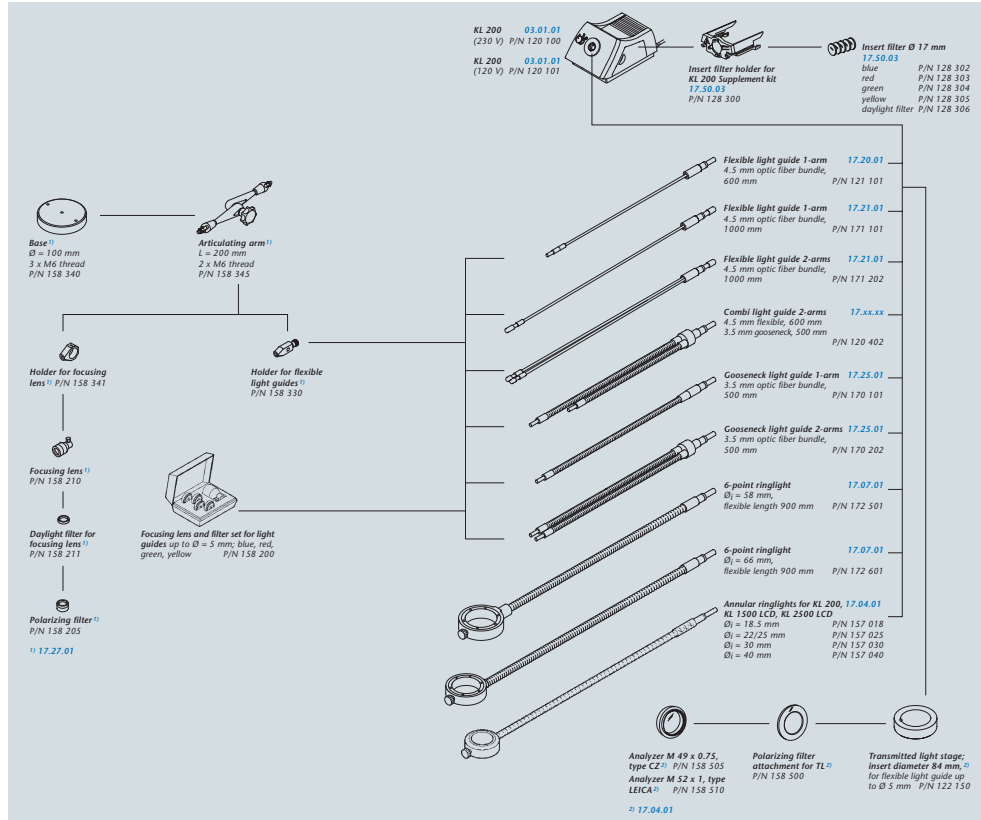
Lamp change door for easy lamp and filter exchange



Self clamping light guide socket for active diameters up to 7 mm



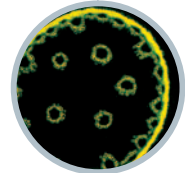
Filter holder with yellow filter



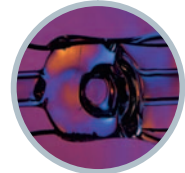
Pyrite with oblique illumination



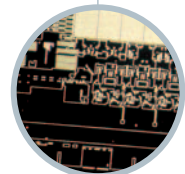
Leg of insect with brightfield illumination



Lily of the valley (Light guide – blue excitation fluorescence)



Halogen Bulb (Transmitted light stage with polarizer)



Wafer (Ringlight – incident darkfield)